

XIENCE V

Visionary Performance

XIENCE V brings the total Abbott Vascular experience to the DES world. XIENCE V combines the state-of-the-art MULTI-LINK VISION CoCr stent platform, excellent deliverability and cytostatic Everolimus pharmacology to make it your DES with no-compromise performance.

STENT LENGTH

STENT DIAMETER	STENT LENGTH					
	8 mm	12 mm	15 mm	18 mm	23 mm	28 mm
2.50 mm	1009527-08	1009527-12	1009527-15	1009527-18	1009527-23	1009527-28
2.75 mm	1009528-08	1009528-12	1009528-15	1009528-18	1009528-23	1009528-28
3.00 mm	1009529-08	1009529-12	1009529-15	1009529-18	1009529-23	1009529-28
3.50 mm	1009530-08	1009530-12	1009530-15	1009530-18	1009530-23	1009530-28
4.00 mm	1009531-08	1009531-12	1009531-15	1009531-18	1009531-23	1009531-28

1. Stone GW. SPIRIT II + SPIRIT III Meta-analysis Presentation, PCR 2007.
 2. As compared to MULTI-LINK PENTA. Based on 28-day pre-clinical data. Data on file at Abbott Vascular.
 3. Ruygrok P. SPIRIT II One Year Presentation, ACC 2007.
 4. Stone GW. SPIRIT III Presentation, ACC 2007.
- All tests performed by and data on file at Abbott Vascular.

Abbott Vascular
3200 Lakeside Drive
Santa Clara, CA 95054
USA
Tel: 1.408.845.3000
Fax: 1.408.845.3333

Abbott Vascular International BVBA
Park Lane
Culliganlaan 2B
B-1831 Diegem
Belgium
Tel: 32.2.714.14.11
Fax: 32.2.714.14.12

All illustrations are artist's renditions. Pictures and specifications represent the most current design (2007). TAXUS® Paclitaxel-eluting Coronary Stent System is a registered trademark of Boston Scientific Corporation or its affiliates.



This product is intended for use by or under the direction of a physician. Prior to use, it is important to read the package insert thoroughly for instructions for use, warnings and potential complications associated with the use of this device.

Information contained herein for distribution outside the USA and Japan ONLY.
Please check the regulatory status of the device before distribution in areas where CE marking is not the regulation in force.

For more information, visit our web site at www.xiencev.com



Xience V

Everolimus Eluting Coronary Stent System

Visionary Performance



The Science Behind Visionary Performance

XIENCE V

Everolimus Eluting Coronary Stent System

XIENCE V offers what you want from a next generation DES: the long-term clinical outcomes you expect, the safety and deliverability you deserve — even in your toughest cases. XIENCE V takes Abbott Vascular's proven thin-strut MULTI-LINK VISION stent to the next level of clinical success, leveraging the controlled release of Everolimus to minimise restenosis, TLR and stent thrombosis.



The Science of Deliverability

Rapid, reliable delivery

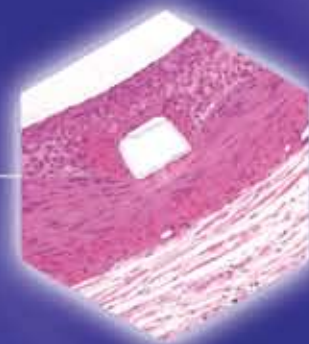
- Proven MULTI-LINK VISION stent and delivery system
- Thin fluoropolymer coating
- Ease of deployment and withdrawal



The Science of Efficacy

Superior clinical results

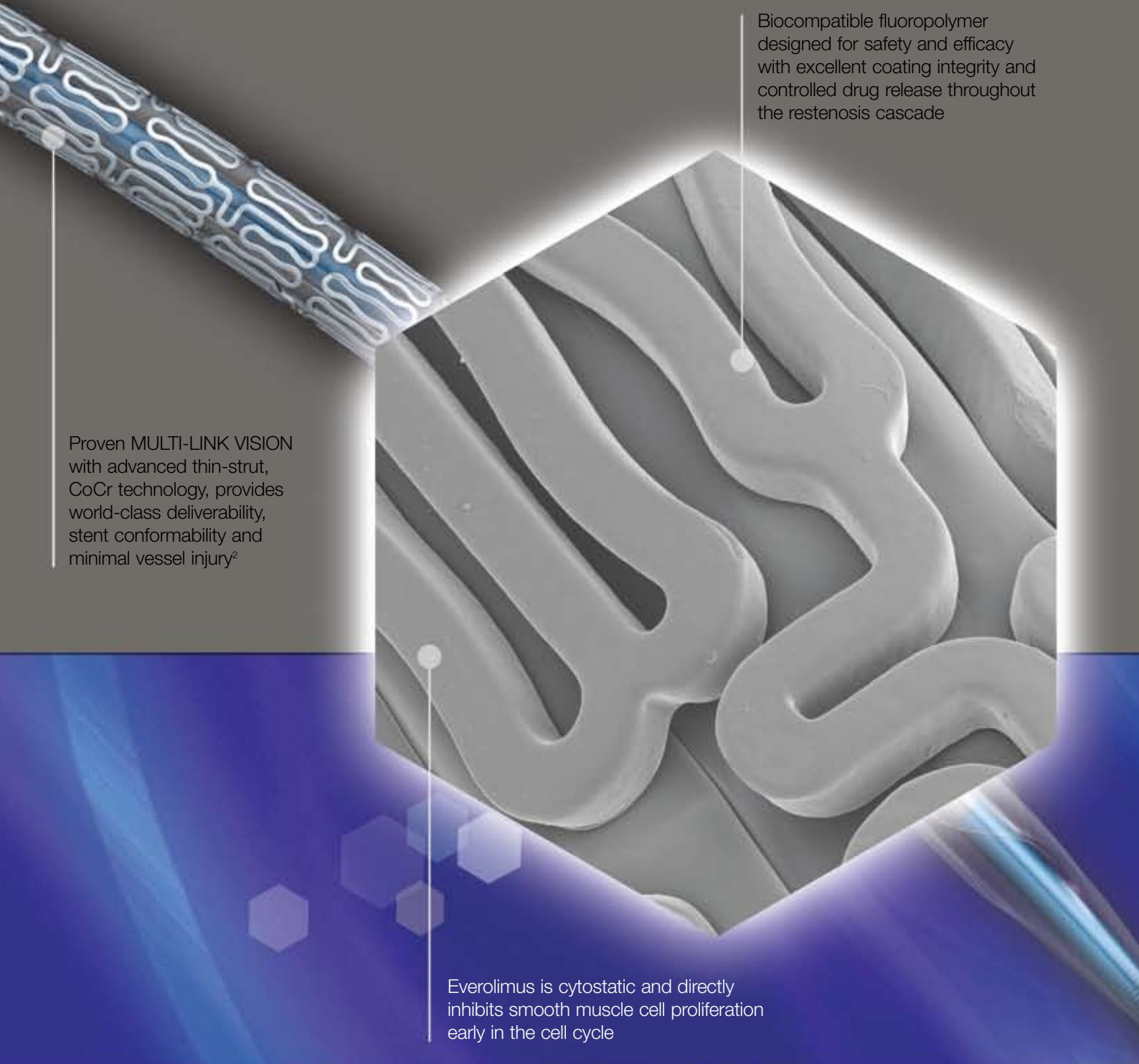
- Controlled release of Everolimus
- Low Everolimus dose
- In-segment Late Loss: 0.11 mm¹
- Ischemia-driven TLR: 2.4%¹



The Science of Safety

Designed for safety

- Thin, biocompatible fluoropolymer
- Wide therapeutic window of Everolimus
- Low MACE rate: 4.1%¹
- Low 0.5% stent thrombosis¹



Biocompatible fluoropolymer designed for safety and efficacy with excellent coating integrity and controlled drug release throughout the restenosis cascade

Proven MULTI-LINK VISION with advanced thin-strut, CoCr technology, provides world-class deliverability, stent conformability and minimal vessel injury²

Everolimus is cytostatic and directly inhibits smooth muscle cell proliferation early in the cell cycle

XIENCE V Superior in MACE

	SPIRIT II ³ 12 months	SPIRIT III ⁴ 9 months	SPIRIT II + III Meta-analysis ¹ 9 months
XIENCE V	2.7%	4.6%	4.1%
TAXUS®	9.2%	8.1%	8.0%
Observed % reduction*	71% reduction p = 0.04*	44% reduction p = 0.028*	49% reduction p = 0.004*

* For descriptive purposes only

XIENCE V shows superior MACE reduction (Cardiac Death, MI and ID driven TLR) versus TAXUS® in SPIRIT II, SPIRIT III and SPIRIT II + III Meta-analysis.